

# Water Coil Datasheet



5902 Old Hwy 80  
 Longview, TX 75606  
 Phone: (903) 212-2645  
 Fax: (903) 295-9130  
 www.specialtycoils.com

<b>Customer:</b>	
<b>Part # / Unit:</b>	
<b>Date:</b>	<b>By:</b>

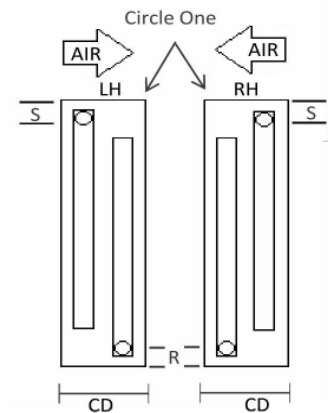
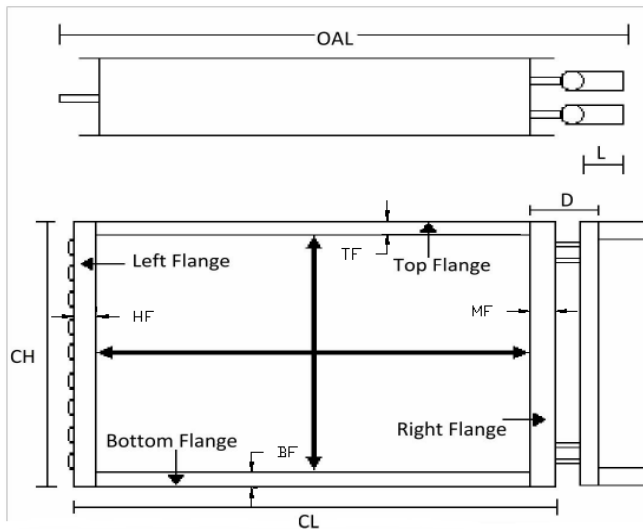
Tubing			Fin Material	Fin Surface	Coil Information
3/8"	1/2"	5/8"	Aluminum .0045	Louvered	RD (Rows Deep)
.014S	.016S	.020S	Aluminum .0055	Sine Wave	TH (Tubes High)
.028S	.025S	.025S	Aluminum .0075		FH (Fin Height)
		.035S	Aluminum .010	(Note: 1/2" and 5/8" Sine Wave Only)	FL (Finned Length)
			Copper .006		FPI (Fins Per Inch)

CASING				
Material				Measurements
Galv.	Alu.	S.S.	Cu.	CH (Casing Height)
20Ga	.050	18Ga	1/16"	CL (Casing Length)
18Ga	.063	20Ga		CD (Casing Depth)
16Ga	.080			OAL (Overall Length)
				HF (Hairpin Flange) In / Out
				MF (Manifold Flange) In / Out
				TF (Top Flange) In / Out
				BF (Bottom Flange) In / Out

Headers and Connections								
	Hdr S1 (D)	Hdr S2 (D)	Hdr R1 (D)	Hdr R2 (D)	Conn S1 (S)	Conn S2 (S)	Conn R1 (R)	Conn R2 (R)
3/8"								
1/2"								
5/8"								
3/4"								
7/8"								
1-1/8"								
1-3/8"								
1-5/8"								
2-1/8"								
2-5/8"								
3-1/8"								
#Legs								
Sweat (L)								
MPT Size								
FPT Size								
Other								

**NOTE: Try and send videos and/or pictures of the coil circuiting also  
 Everything highlighted in yellow must be completed**

## NOTES



PERFORMANCE DATA						
Entering Air (DB)		Entering Water		Air CFM		# Circuits
Entering Air (WB)		GPM		BTUH Required		

